

អង្គការតូលែនដើម្បីអប់រំ

KULEN OUTREACH ORGANIZATION

ANNUAL REPORT

2025



TABLE OF CONTENTS

LETTER FROM
FOUNDERS

2025 IMPACT

CHALLENGES

EDUCATIONAL
MODEL

2025 MAIN
ACHIEVEMENTS

STUDENT
WELL-BEING

A STORY OF
CHANGE

COMMUNITY
ENGAGEMENT

SUSTAINABILITY

FINANCIAL
OVERVIEW

LOOKING AHEAD

LETTER FROM THE FOUNDERS



GORDON ELLIOT

Founder Kulen Outreach

In the rural villages of Kulen Mountain, opportunities are scarce. Many children grow up in families surviving through subsistence farming, far removed from Cambodia's growing economy and educational opportunities.

For generations, the future seemed predetermined: boys followed their fathers into agricultural labor, and girls were often expected to marry young and remain within the household. Education rarely extended beyond the primary years.

Kulen Outreach was founded to change that reality.

Our mission is simple but ambitious: to provide a full education, from primary school to university, for children from the most remote communities of Cambodia.

In 2025, we saw powerful proof that this mission works.

Former students are now returning to their villages as teachers. Young women who once faced early marriage are now studying at university. Children who once had little access to education are learning English, computer skills, and life skills that open doors to entirely new futures.

Education is not only changing individual lives, it is transforming entire communities.

None of this would be possible without the support of our partners, donors, and volunteers around the world.

Together, we are building a generation of leaders from Kulen Mountain.

563

Students in the program

2055

Community members

100

New students enrolled in 2025

2025 IMPACT

Percentage Increase Student Enrollment

+25%

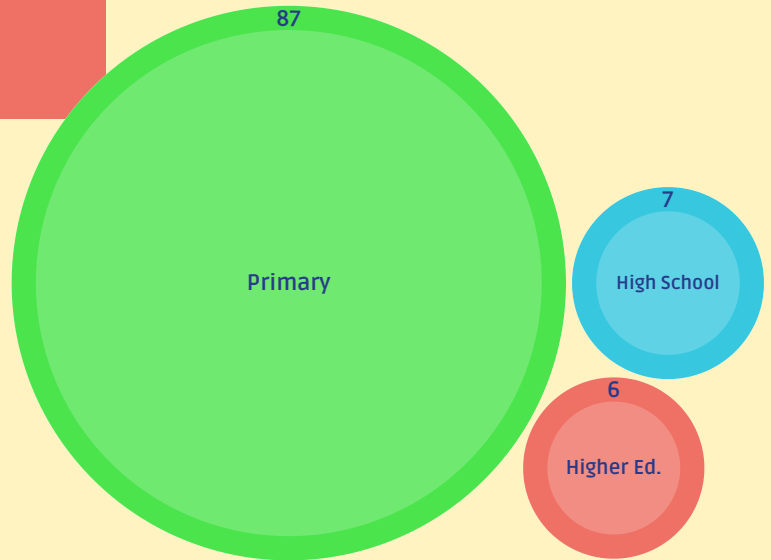
Primary School Program

+6%

High School Program

+23%

Higher Education



70%

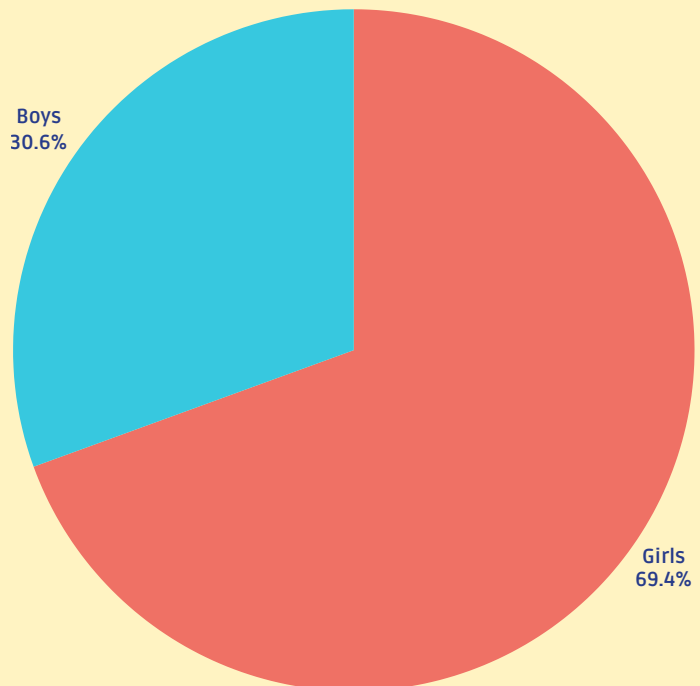
OF OUR HIGH SCHOOL STUDENTS ARE GIRLS

Behind these numbers are stories of girls who would otherwise not be in school today.

Many of the young women in our program are the first in their families to continue their education beyond primary school. Supporting them means opening doors that have long been closed.

But we also believe in walking this journey together. By including boys in our program, we are raising a generation that learns side by side. One that understands respect, equality, and shared opportunity.

Gender High School Students



24%

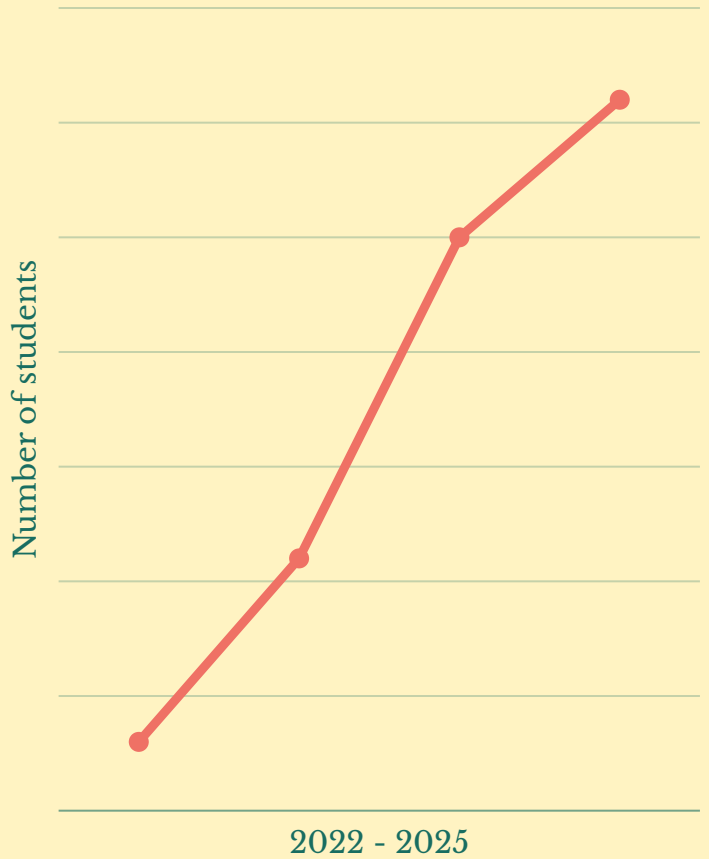
INCREASE OF KULEN OUTREACH STUDENTS IN HIGHER EDUCATION

31

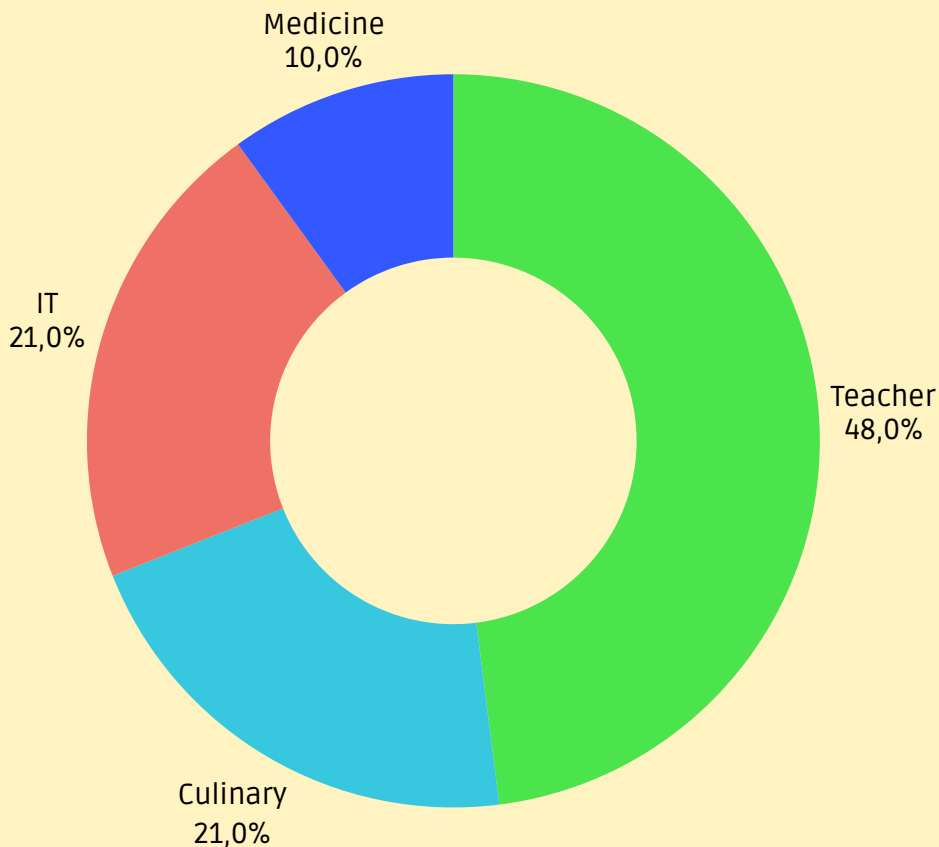
ALUMNI STUDENTS ARE ENROLLED IN HIGHER EDUCATION

All of them are the first in their families to pursue higher education, and most are the first to finish any schooling.

ALUMNI STUDENTS IN HIGHER EDUCATION



STUDY FIELDS ALUMNI STUDENTS



THE CHALLENGE

EDUCATION IN RURAL CAMBODIA

Children growing up on Kulen Mountain face major barriers to education. Without intervention, the dense jungle and other barriers isolate families in a cycle of poverty that continues across generations.

Kulen Outreach addresses these challenges through a long-term educational pathway that supports students from primary school through university.



Education

Limited access to secondary education.

No access to any form of higher education.



Poverty

Poverty that forces families to prioritize work over education.

Early marriage expectations for girls.



Infrastructure

Remote villages with dangerous jungle roads, limited access to schools, and a lack of trained teachers.



OUR EDUCATIONAL MODEL

KULEN OUTREACH SUPPORTS STUDENTS THROUGH THREE STAGES OF EDUCATION:



Primary School & Learning Center

Students receive additional education in:
English language
Ethics and personal development
Project-Based Learning
Introductory computer skills



Secondary School Program

Students from remote villages live in a safe residential environment while attending high school. On top of English classes and Project-Based Learning classes with a focus on teamwork, problem-solving skills, and critical thinking skills, they receive: tutoring, mentoring, life-skills education, emotional support, and academic guidance.




University & Vocational Support

All our graduates receive financial support and mentorship to pursue university or vocational education.

2025 MAIN ACHIEVEMENTS

OPENING OF THE KULEN LEARNING CENTER



For the first time, all Grade 5 and Grade 6 students from Popel and Khlah Khmum villages now receive daily additional education in the afternoons. Provide rural students with access to educational opportunities that previously did not exist in their communities.



Students now learn

- English language
- Ethics
- Health and Hygiene
- Teamwork and Communication
- Introductory IT skills
- Goal Setting and Personal Development



Immediate results

Teachers report that even younger children gather outside the classroom windows to follow the lessons. This is a powerful sign of increased motivation and curiosity for learning.

2025 MAIN ACHIEVEMENTS

INVESTING IN TEACHERS

Quality education requires strong teachers. In 2025, Kulen Outreach invested heavily in teacher development.

All boarding school teachers completed the Teacher Development Program, an internationally recognized training program focused on modern classroom practices.

Teachers learned:
student-centered teaching methods
classroom management
active learning techniques
curriculum planning

The result has been a dramatic shift in the classroom environment.

Students now learn through games, collaboration, and problem-solving rather than passive memorization. Teachers report significantly higher student engagement and confidence.



Bachelor's
Certified
teaching Crops

100%

Teachers with
additional
certification

86%

STUDENT WELL-BEING AND MENTAL HEALTH



RANY

Day-time Caregiver

Students from rural communities often face significant emotional challenges.

In 2025, Kulen Outreach expanded its support systems to include counseling and emotional support programs for students.

These programs help students cope with:

- homesickness
- academic pressure
- family expectations
- traumatic childhood experiences



CHANTREA

Night-time Caregiver

Teachers and caregivers work closely with students to build resilience, confidence, and emotional wellbeing.

Their support has already proven essential for helping students stay engaged in their education.

A STORY OF CHANGE

CHARIYA'S DREAM

Chariya is ten years old and lives with her grandmother and sister in a small village on Kulen Mountain.

Her parents left after a difficult divorce, leaving the girls to care for their grandmother, who is suffering from memory loss.



21%

of women are unpaid family workers in Cambodia

15%

of women never attend school in rural Cambodia

For Chariya, life has often felt uncertain and frightening.

But everything changed when she joined the Kulen Outreach Learning Center.

Now she attends Grade 8 classes where she learns English, studies science, and develops the confidence to pursue her dream of becoming a doctor.

Her teachers check in with her every day and support her academically and emotionally.

For the first time, Chariya believes that her future can be different.

COMMUNITY ENGAGEMENT

Education does not happen in isolation.
Throughout 2025, Kulen Outreach strengthened
relationships with families and local leaders through:

FAMILY DAY

A fun open day
where the families
of our students
come visit

PARENT- TEACHER CONFERENCES

Including parents
in the educational
proces of their
children

COMMUNITY MEETINGS

Asking for input
and guidance
from the
Mountain
Communities

SCHOOL VISITS

Younger students
visit the boarding
school to help ease
the step from Kulen
Mountain to Siem
Reap city

WORKING CLOSELY TOGETHER WITH AUTHORITIES

COMMUNITY IMPACT

Graduates return to their communities as
teachers, professionals, and leaders.

This creates a cycle of opportunity, where
education generates long-term development
within the community itself



BUILDING SUSTAINABLE IMPACT

LONG-TERM SUSTAINABILITY REMAINS CENTRAL TO THE KULEN
OUTREACH MISSION

10/10

Financial
sustainability

10/10

Community
participation

9/10

Organizational
development

9/10

Local partnerships

8/10

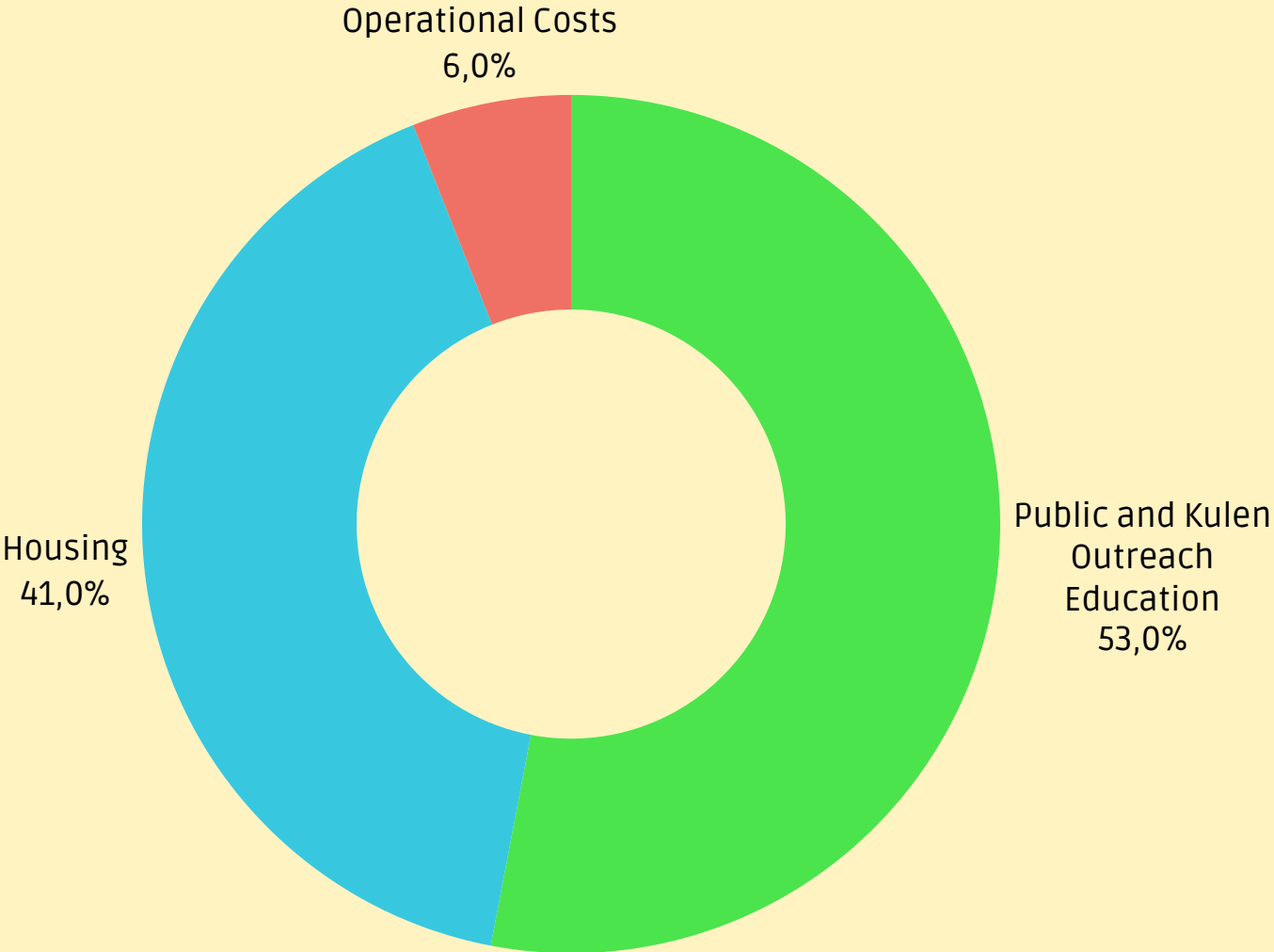
Environmental
sustainability

*Score Global Development Group



These strong indicators demonstrate the long-term viability and community ownership of the programs.

FINANCIAL OVERVIEW



LOOKING AHEAD TO 2026

IN THE COMING YEAR, KULEN OUTREACH AIMS TO:



Expanding our programs in the local villages on Kulen Mountain



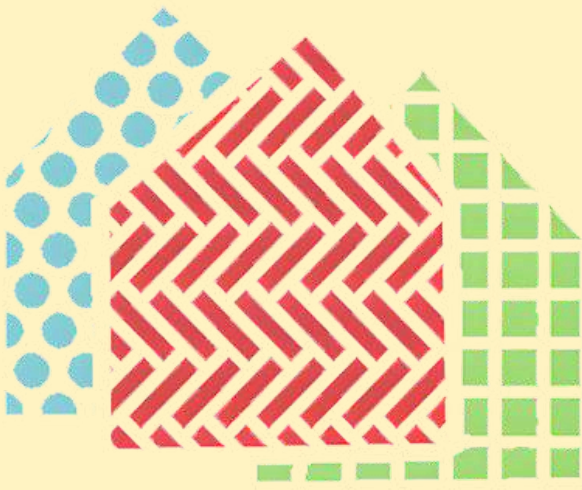
Increasing our student body by expanding to more isolated villages on Kulen Mountain



Deepen partnerships with local communities

OUR GOAL REMAINS UNCHANGED

To ensure that every child in our program can complete their education from first grade until college graduation.



អង្គការគូលែនដើម្បីអប់រំ

KULEN OUTREACH ORGANIZATION

A Full **Education** Until College **Graduation**

